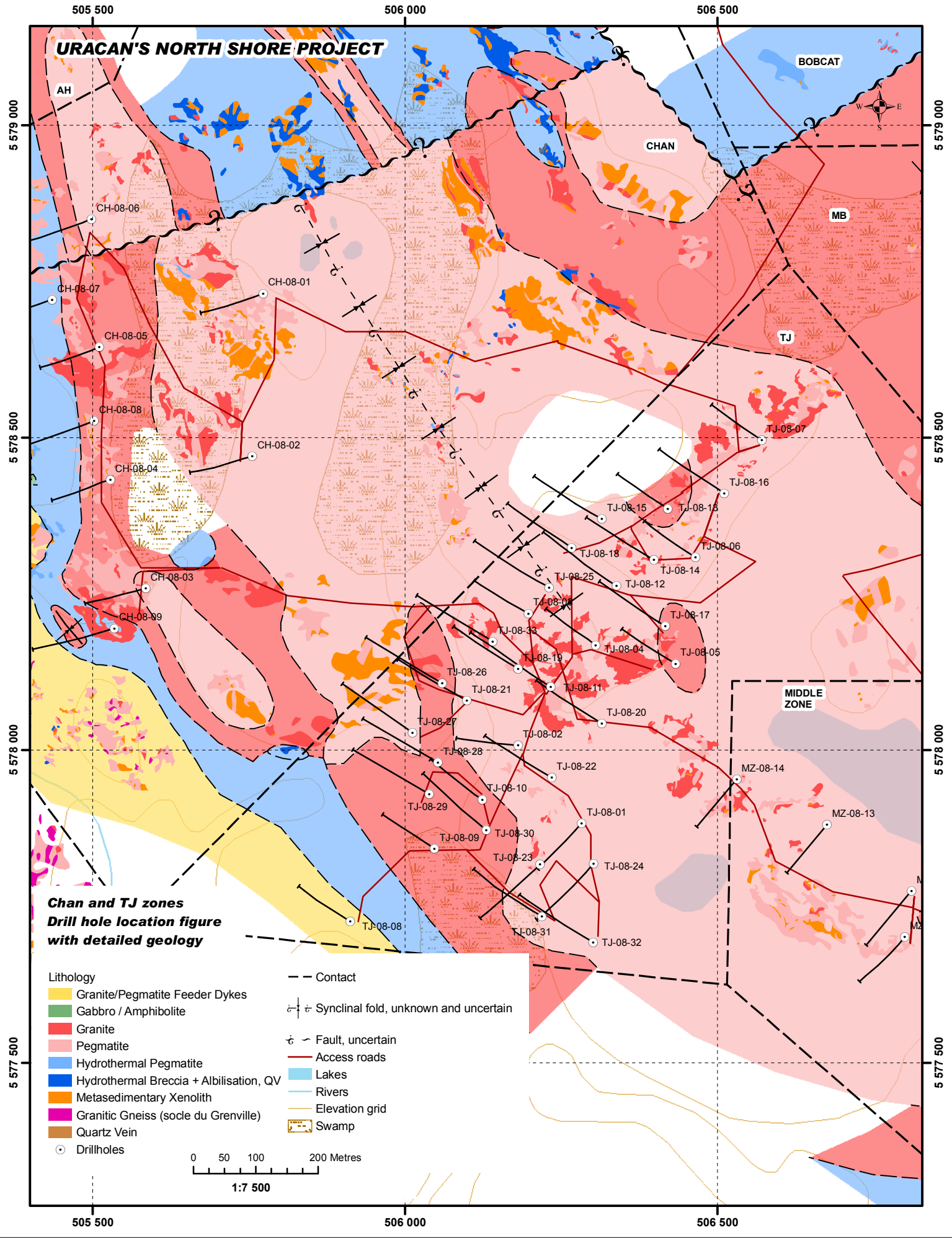
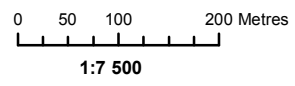


URACAN'S NORTH SHORE PROJECT



**Chan and TJ zones
Drill hole location figure
with detailed geology**

- | | |
|---|---|
| Lithology | --- Contact |
| Granite/Pegmatite Feeder Dykes | ⊕ ⊖ Synclinal fold, unknown and uncertain |
| Gabbro / Amphibolite | ⊕ ⊖ Fault, uncertain |
| Granite | — Access roads |
| Pegmatite | ☑ Lakes |
| Hydrothermal Pegmatite | — Rivers |
| Hydrothermal Breccia + Albitisation, QV | — Elevation grid |
| Metasedimentary Xenolith | ☑ Swamp |
| Granitic Gneiss (socle du Grenville) | ○ Drillholes |
| Quartz Vein | |



BOBCAT

CHAN

MB

TJ

MIDDLE ZONE

MZ-08-13

MZ-08-14

MZ-08-15

MZ-08-16

MZ-08-17

MZ-08-18

MZ-08-19

MZ-08-20

MZ-08-21

MZ-08-22

MZ-08-23

MZ-08-24

MZ-08-25

MZ-08-26

MZ-08-27

MZ-08-28

MZ-08-29

MZ-08-30

MZ-08-31

MZ-08-32

MZ-08-33

MZ-08-34

MZ-08-35

MZ-08-36

MZ-08-37

MZ-08-38

MZ-08-39

MZ-08-40

MZ-08-41

MZ-08-42

MZ-08-43

MZ-08-44

MZ-08-45

MZ-08-46

MZ-08-47

MZ-08-48

MZ-08-49

MZ-08-50

MZ-08-51

MZ-08-52

MZ-08-53

MZ-08-54

MZ-08-55

MZ-08-56

MZ-08-57

MZ-08-58

MZ-08-59

MZ-08-60

MZ-08-61

MZ-08-62

MZ-08-63

MZ-08-64

MZ-08-65

MZ-08-66

MZ-08-67

MZ-08-68

MZ-08-69

MZ-08-70

MZ-08-71

MZ-08-72

MZ-08-73

MZ-08-74

MZ-08-75

MZ-08-76

MZ-08-77

MZ-08-78

MZ-08-79

MZ-08-80

MZ-08-81

MZ-08-82

MZ-08-83

MZ-08-84

MZ-08-85

MZ-08-86

MZ-08-87

MZ-08-88

MZ-08-89

MZ-08-90

MZ-08-91

MZ-08-92

MZ-08-93

MZ-08-94

MZ-08-95

MZ-08-96

MZ-08-97

MZ-08-98

MZ-08-99

MZ-08-100

MZ-08-101

MZ-08-102

MZ-08-103

MZ-08-104

MZ-08-105

MZ-08-106

MZ-08-107

MZ-08-108

MZ-08-109

MZ-08-110

MZ-08-111

MZ-08-112

MZ-08-113

MZ-08-114

MZ-08-115

MZ-08-116

MZ-08-117

MZ-08-118

MZ-08-119

MZ-08-120

MZ-08-121

MZ-08-122

MZ-08-123

MZ-08-124

MZ-08-125

MZ-08-126

MZ-08-127

MZ-08-128

MZ-08-129

MZ-08-130

MZ-08-131

MZ-08-132

MZ-08-133

MZ-08-134

MZ-08-135

MZ-08-136

MZ-08-137

MZ-08-138

MZ-08-139

MZ-08-140

MZ-08-141

MZ-08-142

MZ-08-143

MZ-08-144

MZ-08-145

MZ-08-146

MZ-08-147

MZ-08-148

MZ-08-149

MZ-08-150

MZ-08-151

MZ-08-152

MZ-08-153

MZ-08-154

MZ-08-155

MZ-08-156

MZ-08-157

MZ-08-158

MZ-08-159

MZ-08-160

MZ-08-161

MZ-08-162

MZ-08-163

MZ-08-164

MZ-08-165

MZ-08-166

MZ-08-167

MZ-08-168

MZ-08-169

MZ-08-170

MZ-08-171

MZ-08-172

MZ-08-173

MZ-08-174

MZ-08-175

MZ-08-176

MZ-08-177

MZ-08-178

MZ-08-179

MZ-08-180

MZ-08-181

MZ-08-182

MZ-08-183

MZ-08-184

MZ-08-185

MZ-08-186

MZ-08-187

MZ-08-188

MZ-08-189

MZ-08-190

MZ-08-191

MZ-08-192

MZ-08-193

MZ-08-194

MZ-08-195

MZ-08-196

MZ-08-197

MZ-08-198

MZ-08-199

MZ-08-200

MZ-08-201

MZ-08-202

MZ-08-203

MZ-08-204

MZ-08-205

MZ-08-206

MZ-08-207

MZ-08-208

MZ-08-209

MZ-08-210

MZ-08-211

MZ-08-212

MZ-08-213

MZ-08-214

MZ-08-215

MZ-08-216

MZ-08-217

MZ-08-218

MZ-08-219

MZ-08-220

MZ-08-221

MZ-08-222

MZ-08-223

MZ-08-224

MZ-08-225

MZ-08-226

MZ-08-227

MZ-08-228

MZ-08-229

MZ-08-230

MZ-08-231

MZ-08-232

MZ-08-233

MZ-08-234

MZ-08-235

MZ-08-236

MZ-08-237

MZ-08-238

MZ-08-239

MZ-08-240

MZ-08-241

MZ-08-242

MZ-08-243

MZ-08-244

MZ-08-245

MZ-08-246

MZ-08-247

MZ-08-248

MZ-08-249

MZ-08-250

MZ-08-251

MZ-08-252

MZ-08-253

MZ-08-254

MZ-08-255

MZ-08-256

MZ-08-257

MZ-08-258

MZ-08-259

MZ-08-260

MZ-08-261

MZ-08-262

MZ-08-263

MZ-08-264

MZ-08-265

MZ-08-266

MZ-08-267

MZ-08-268

MZ-08-269